

AiPi-Remote firmware use tutorial



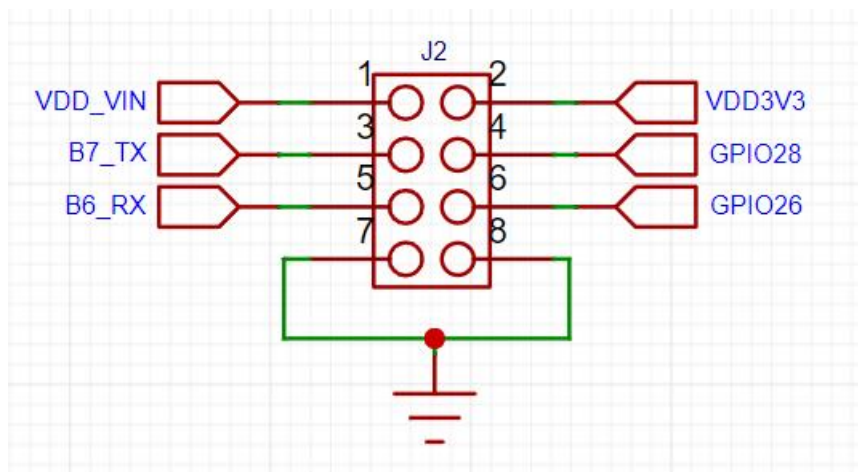
Burning firmware

1. VC-02

(1) Wiring

TTL tool	AiPi J2 pin header
3.3V	3.3V
TXD	RX
RXD	TX
GND	GND

J2 schematic diagram:



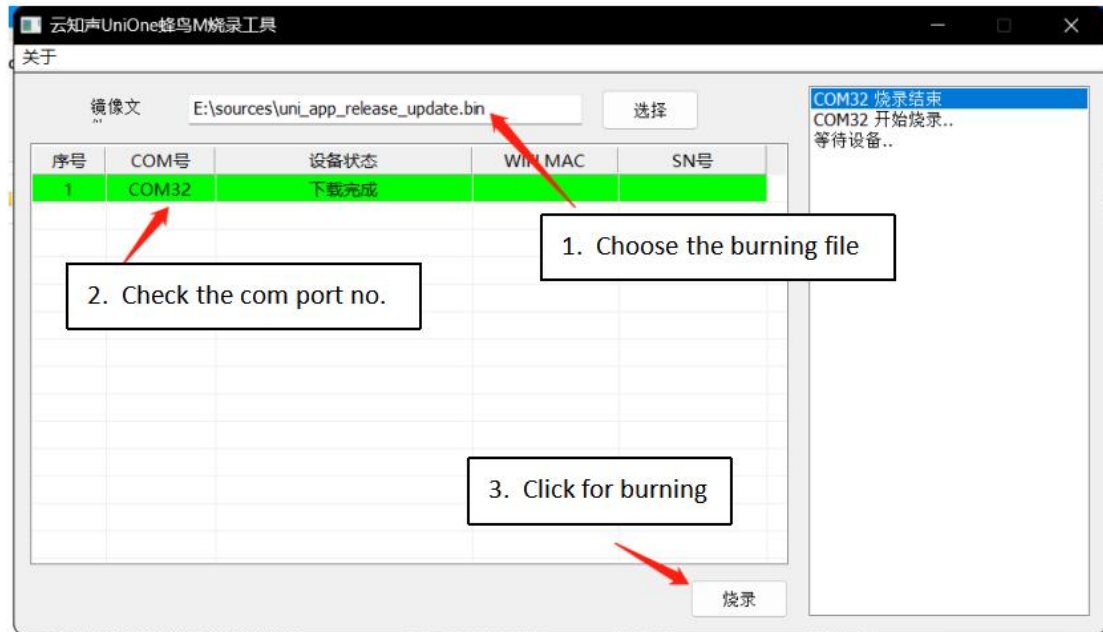
(2) Burning

Download burning tool: [click to download](#)

Firmware address: [click to download](#)

Short press the S11 button to enter the burning mode before the burning tool start burning.

The burning tool briefly presses the S11 button to enter the burning mode before the burning record begins.



Open UniOneUpdateTool.exe, Select COM port no. and burn files, click burn.

2. Ai-M61-32S

(1) Wiring

TTL tool	AiPi J3 pin header
3.3V	3.3V
TXD	RX
RXD	TX
GND	GND

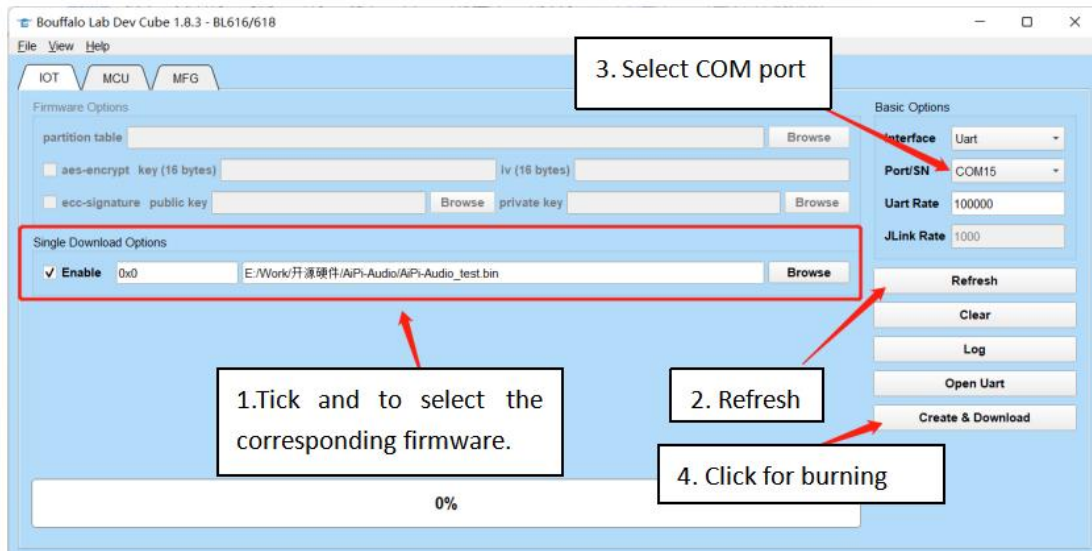
(2) Burning

Download burning tool: [Click to download](#)

Firmware address: [Click to download](#)

Burning tool start burning, **first press S2 button (Download button), then press S2(Reset button) and release to enter the burning mode.**

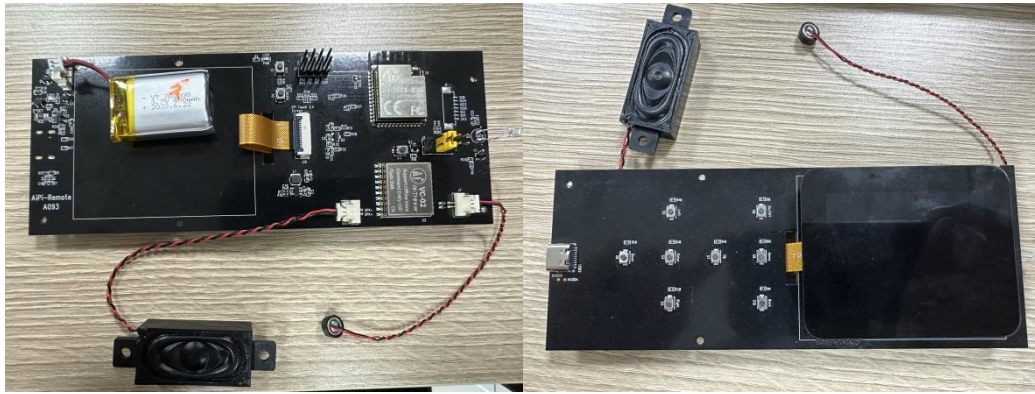
Open BLDevCube.exe, choose BL616/618, click Finish.



Note : After the firmware is burned, you need to press the reset button once before the program can run.

Use steps

The AiPi-Remote has a speaker, a Microphone and a power supply, as well as a 2.4-inch touch LCD screen.

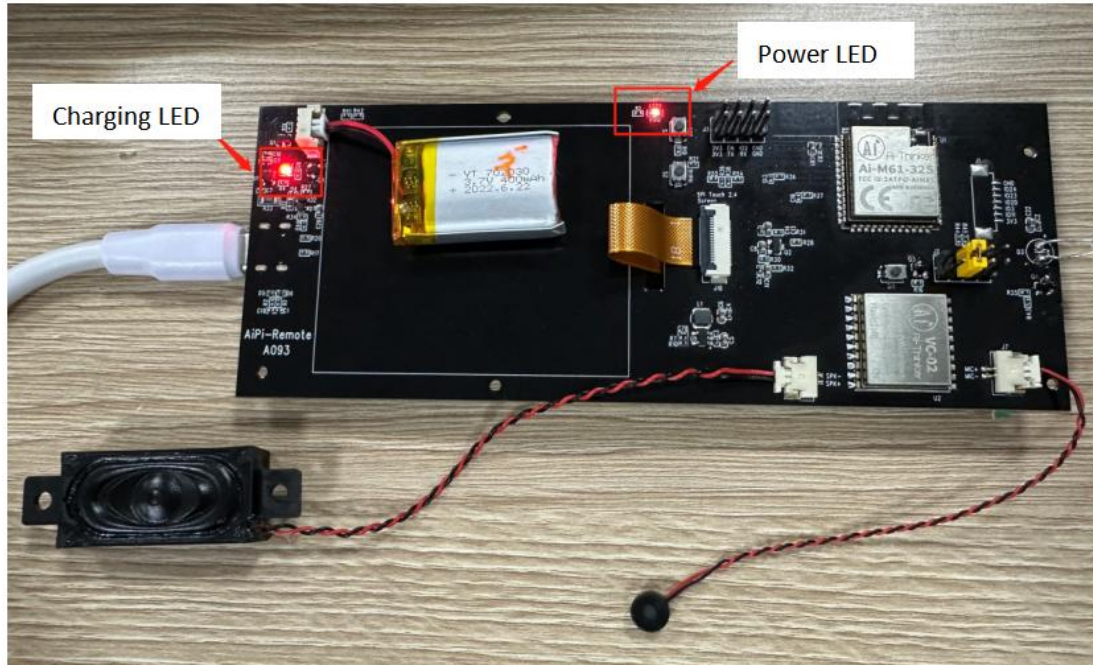


Firmware function:

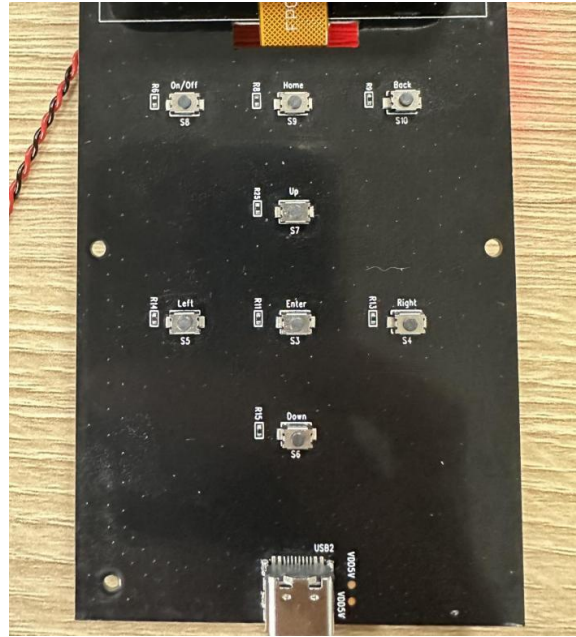
1. The screen displays driver, and you can use the screen to control the function interface.
2. The function of firmware is broadcast, and the speaker will broadcast the boot sound and voice control function.
3. 8 keys to realize functional control.

Functional display

After power on, the power LED light will light on, after charging, the charging LED light will light up, the speaker will broadcast "Welcome to use the AiPi remote controller", the remote control screen displays the remote control function interface, and the remote control function can be realized through three ways: button, touch screen and voice.



In terms of keys, the firmware controls S8 button to switch the air conditioner, S9 button switches the mode, S10 button adjusts the wind speed, S7 button raises the temperature, and S6 button reduces the temperature.



In terms of the touch screen, the middle is the touch screen switch icon of the air conditioning switch; the middle is the disk icon controlling the temperature and showing the current air conditioner, dragging the dot on the disk to set the size of the air conditioning temperature; the upper right corner shows the power of the current remote control; click the small fan icon to adjust the wind speed, with automatic, fixed wind, high wind, stroke, low wind; click M small icon switch mode, automatic, heating, cooling and air supply mode.



In terms of sound, saying the remote control can control the function, the awakening word "Xiaoan Xiaoan, turn on the air conditioner" turns on the air conditioner, the awakening word "Xiaoan Xiaoan, temperature higher" increases the air conditioning temperature for one point, "Xiaoan Xiaoan, temperature lower" reduces the air conditioning temperature for one point, and the awakening word "Xiaoan Xiaoan, turn off the air conditioner".