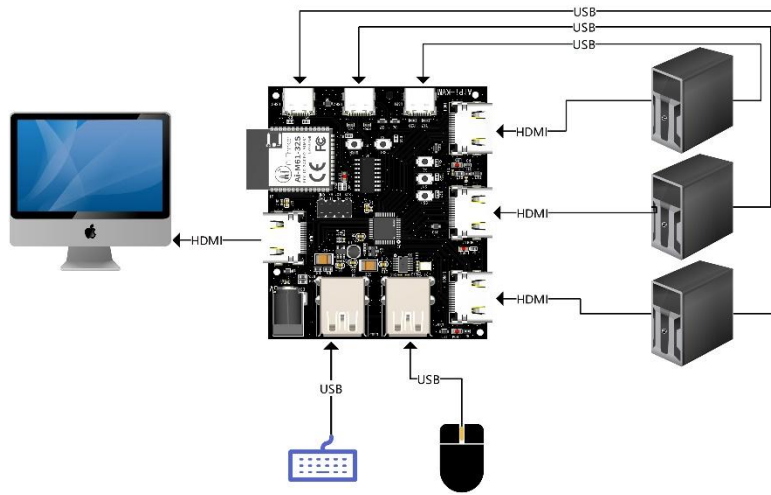


# AiPi-KVM Firmware User Guide

AiPi-KVM is a three-in and one-out HDMI+USB switch that allows one monitor to switch to one of three hosts, and at the same time switches the USB devices (keyboard, mouse, etc.) on the KVM to the target. in the host.

This device is convenient for developers to use when there is only one monitor and three computer hosts.



## 1. Firmware burning

### 1. Serial port wiring

TTL tool	AiPi
3.3V	3.3V
TXD	RX
RXD	TX
GND	GND

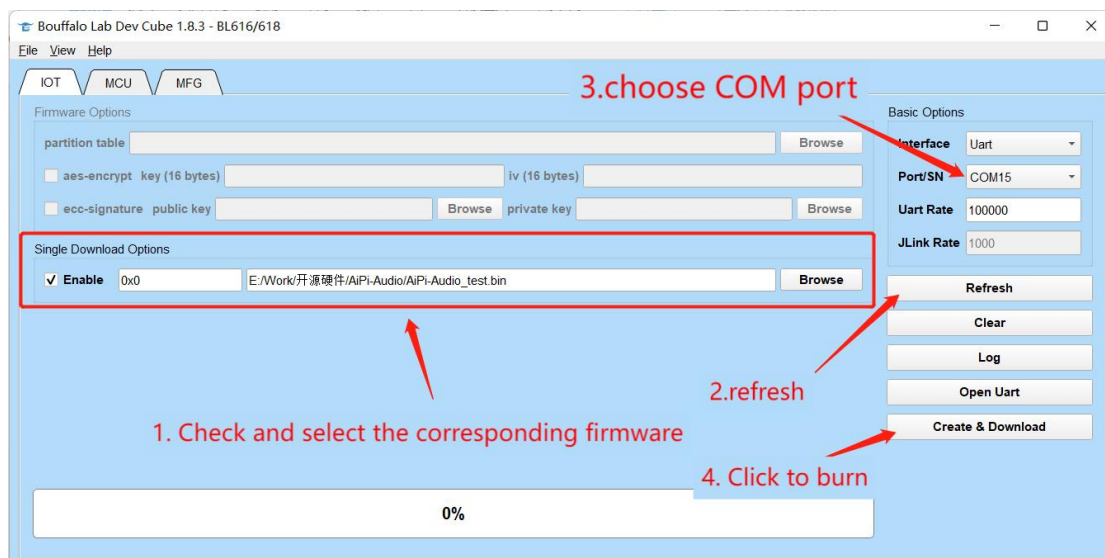
### 2. burning

Burning tool download: [click to download](#)

Firmware address: After the burning tool starts burning, **first press and hold the "Download Button", then press the "Reset Button" and release it** to enter the burning

mode.

Open BLDevCube.exe, choose BL616/618, click Finish.



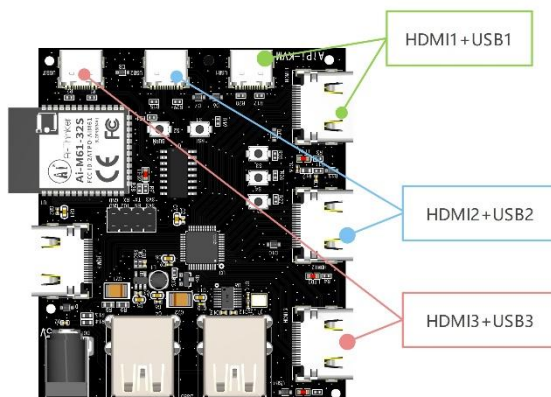
**Note:** After the firmware burning is completed, you need to press the reset button once before the program can run.

## 2. Steps for usage

### 1. connect

**AiPi-KVM does not require additional power supply ports because the 5V of USB and HDMI is enough to power the entire board.**

AiPi-KVM has many interfaces, among which there are three groups of inputs: HDMI1+USB1, HDMI2+USB2, HDMI3+USB3. Each group of them is connected to the same host in pairs. So you need to prepare an HDMI cable and Type-C USB data cable.



In addition, the HDMI output and keyboard and mouse access can be referred to [Figure 1](#)

## 2. Switch

The three touch buttons on the board respectively correspond to the selection of three hosts:

Button No.	HDMI channel	USB channel
S3	HDMI1	USB1
S4	HDMI2	USB2
S5	HDMI3	USB3

For example, when S3 is pressed, the HDMI output and keyboard and mouse will be switched to the first host at the same time, and the screen will display the page of the first host.

## 3. Power-off storage

AiPi-KVM can store the currently set channel, so when AiPi-KVM restarts, it can automatically set the last channel before power failure.