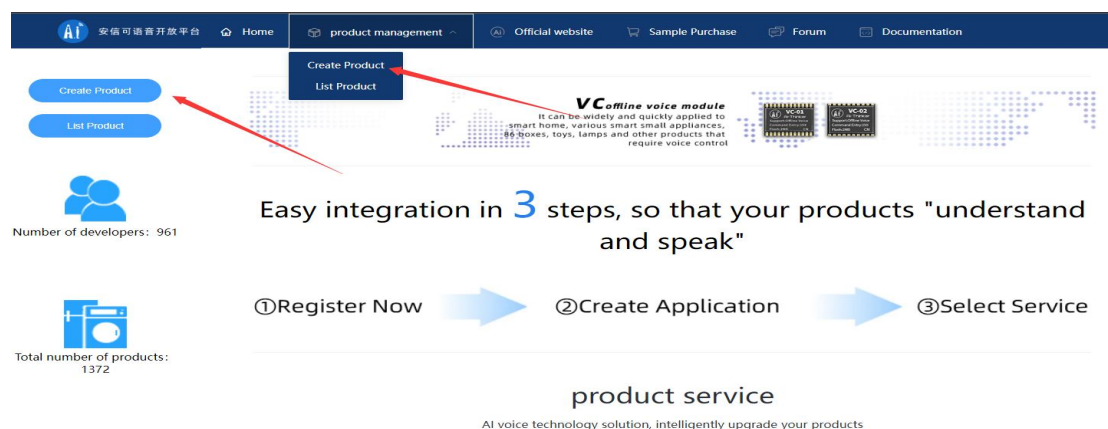


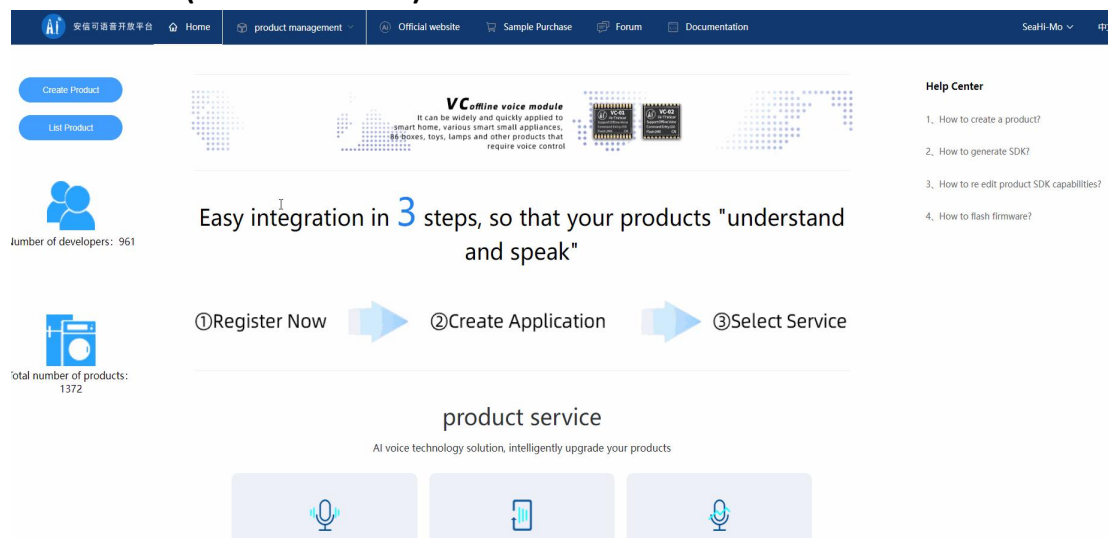
How to create a product?

You can quickly create a new product in just a few simple steps:

1. On the homepage of the platform, click the button "Create Product" to enter the page for creating a new product. (As shown below)



2. Fill in the product name correctly, select the required scene and select the module. (As shown below)



3. Enter the setting page of the relevant system platform to configure the capabilities of the relevant SDK.

3.1 Customize product wake words, and wake up reply words

Support wake-up word custom configuration of 3-6 words;

In order to ensure the best wake-up experience for voice products, the platform provides a scoring function for the pronunciation of wake-up words and provides specific guidance information;

Wake words involving illegal content such as pornography, gambling, drugs, political sensitivity, vulgar abuse, etc. shall not be used;

For complete wake word definition rules, click "Wake Word Customization Rules" on the interface

Wake-up reply supports up to 5, which will be broadcast randomly after setting

Wake-up word customization

Through customization, code can be automatically generated, and ports such as GPIO, PWM, and UART can output custom signals according to voice commands, and external devices can be controlled without code development. [Wake-up Word Custom Rules](#)

Wake-up Word	Pinyin	operation
Hi puding		delete

Wake-up low middle high

Sensitivity

reply for wake-up

yes	delete
I am here	delete
Can I help you?	delete

3.2 Fill in the command word and response word according to the rules

As shown in the figure below, you can directly enter the definitions of command words and response words in the page. You can refer to the platform's default statement case format for settings.

Customize offline command words and response words

If you want to control your own device, come and configure custom command words to make your device smart.

index	behavior	command word	reply word	operation
1	TurnOn	Turn on the light	OK,Turn on the light	delete
2	TurnOff	Turn off lights	OK,Turn off lights	delete

Note: If you want to adjust the device volume, please set the action to volumeUpUni (increase volume), volumeDownUni (decrease volume), volumeMaxUni (maximum volume), volumeMidUni (medium volume), volumeMinUni (minimum volume), otherwise it will not take effect.

automatic study commands

Grammar format description and rules introduction

To facilitate product construction, the platform defines a set of syntax formats, which consist of:

action=command word 1|command word 2...@reply word

Example: TempSet15=set fifteen degrees|fifteen degrees@has been set to fifteen degrees

action It is the unique identifier of a control command. When the user speaks "set fifteen degrees" and "fifteen degrees" to the device and is semantically understood, if the device is connected, the semantic understanding module will transmit TempSet15 to the device.

Command word which is the voice phrase that the user wants to define, and the user must say it according to the defined phrase to be valid. For example, the user can use "set fifteen degrees" and "fifteen degrees" to realize the control of the same set

temperature of 15 degrees.

Reply word It is the reply broadcast for the device for this control command.

Actions, command words, and reply words are all defined by the user. The action before the equal sign is a unique value; after the equal sign, multiple command words can be entered, separated by the “|” symbol; after the @ is the reply word, and each control command can define the corresponding reply.

Click the question mark (?) after the syntax format to see the syntax format requirements:

∅ Action consists of English, underscore “_” and numbers, must start with English, case-insensitive, within 15 characters

∅ A maximum of 100 command words are supported, each with a limit of 2 - 10 characters,

∅ An action only supports one reply, and the total number of reply words cannot exceed 500 characters. Chinese, numbers, commas, periods, and question marks are supported.

Click the question mark after the grammar sentence, you can see the label usage instructions for the special pronunciation of the reply broadcast:

∅ The numbers need to be broadcast according to the numerical reading

Example: set to 15 degrees

Announced as: Set to fifteen degrees

∅ The numbers need to be broadcast bit by bit according to the number string

Example: set to 15 degrees

Announced as: Set to one or five degrees

Users can specify specific competing words (which can be understood as invalid command words) in the offline command word customization part to prevent misrecognition with a certain probability.

The format is as follows

Special_Gabages=Order Word 1|Order Word 2|Order Word 3|...

Taking air-conditioning products as an example, there is no temperature control command higher than 32 degrees. When the user says "36 degrees", they do not want the air conditioner to recognize "16 degrees";

Taking air conditioner products as an example, there is no command for automatic wind. When the user says "automatic wind", he does not want the air conditioner to recognize "natural wind" (if the threshold is set low).

An example is as follows:

Example: Special_Gabages=36° |46° |56° |66°

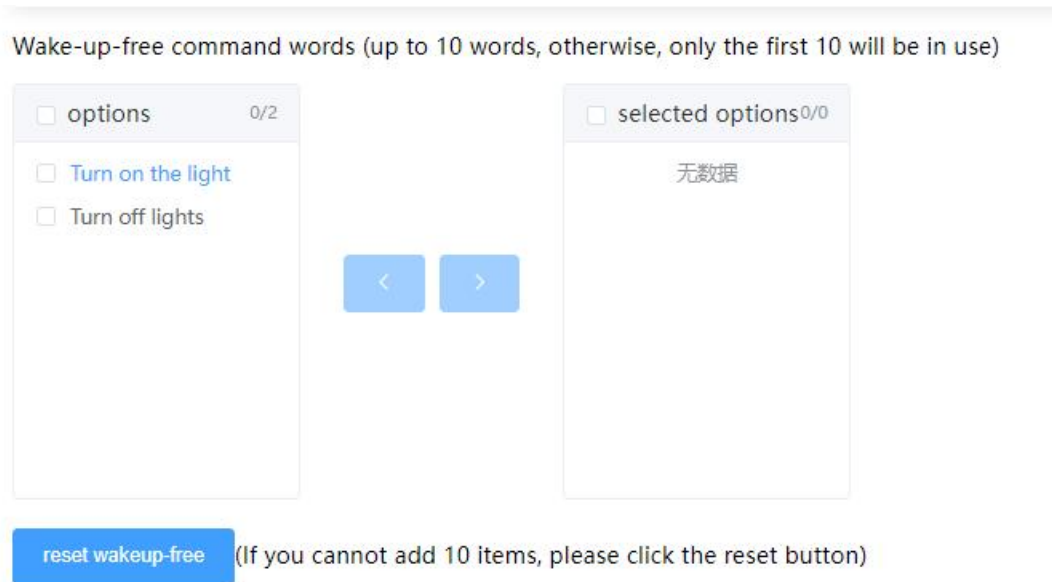
3.3 Wake-free command word

No need to wake up, you can control the device by speaking the command word. The

wake-up-free command word here needs to be set in the offline command word customization module before you can select and configure it.

After the wake-up-free command word takes effect, the device will be in the wake-up state.

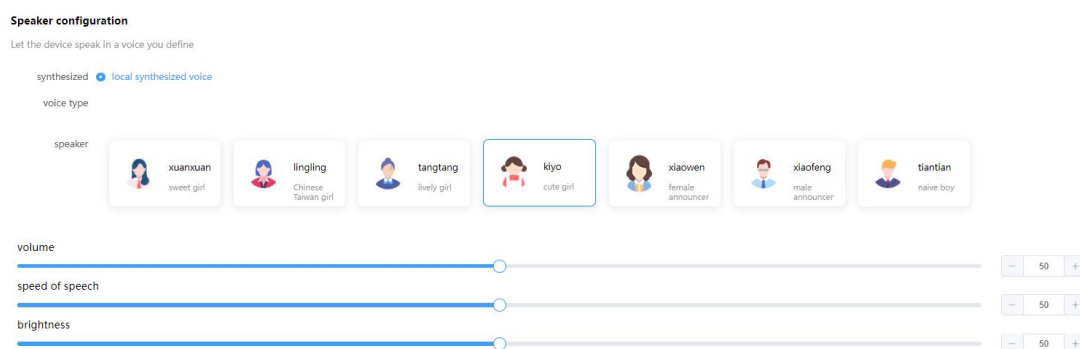
The wake-up-free command word and the wake-up word can exist at the same time or alone, and the sum of the two cannot exceed 10. For some specific voice products, only wake-up command words can be used instead of wake-up words.



3.4 According to the product positioning, choose the speaker who is suitable for the product form

The lively and lovely Xuanxuan and KiYo, the childlike Tangtang and Tiantian, the gentle and amiable Lingling, the solemn and serious Xiaowenyu and Xiaofeng, seven tones are available;

Adjustable volume and speech rate;



3.5 Other configuration

3.5.1 Boot sound configuration

The product defaults to the startup ringtone. If you need to customize the startup welcome message, you can also choose to customize the content. The product will automatically broadcast after the product is turned on. The welcome speech broadcast is limited to Chinese, and you can enter 30 characters; you can also choose not to use the startup sound.

other configuration

Let the device speak in a voice you define

boot broadcast has boot broadcast no boot broadcast

broadcast context

reply for timeout timeout time: - 10 + seconds (Recommended between 5-60 seconds)

reply for quit see you later delete

+add

quit

quit command goodbye delete

+add

reply for quit see you later delete

+add

3.5.2 Identify status exit related configuration

In order to ensure the user experience, the voice product will automatically exit the recognition state if there is no voice input for a period of time after waking up. If you need to enter a command word, you need to wake up again.

The valid time for waiting for the user to input a voice command is the "wake-up timeout and exit time".

In order to ensure the product has a better user experience, it supports the timeout and exit time setting of 5s - 60s, the default is 10 seconds

Maximum 2 can be set for timeout exit reply

When the user wants to end the conversation, he can also actively request to exit the recognition state.

The default exit command is "exit" and "goodbye", which can be modified according to the product definition, up to 3 can be set

A maximum of 2 can be set for active exit reply

4. After the setting is complete, click "Generate New Version" to successfully create the product.